

# 12+ Nissan Patrol with Original Latch

12+ 日产途乐原厂上吸

## Precautions for installation of electric tailgate

1. In order to ensure the safety and normal use of the product, please hand it over to the professional staff who sell the product for installation. Do not disassemble the machine without permission, so as to avoid damage and accidents.

2. Before loading, start the engine first, check whether the function display of the vehicle instrument, the operation of the keys in the vehicle are normal, and whether the internal and external surfaces of the vehicle are scratched. If there is any problem, report it to the customer in time. 3. Check whether the tailgate is opened / closed normally and whether the lamps are normal.

4. Shut down the engine and prepare relevant tools.

5. The installers should first take off the metal articles and other hard objects carried by them to prevent damage to the car seats or interior trim during disassembly and assembly.

6. During the installation process, pay attention to placing the removed automobile components properly to avoid scratching the instruments and desks in the vehicle. The sundries left during wiring shall be handled in time and shall not be left in the vehicle. The joint must be insulated to prevent short circuit.

7. According to the wiring method of our company, the moving parts of the vehicle, such as the steering wheel transmission shaft, oil, brake pedal and other vehicle control parts, should not be affected during the wiring process. After wiring, all harnesses shall be fixed to prevent loosening.

8. Please connect each harness according to the wiring mode of our company (pay attention to the position of ground wire).

9. Do not plug or unplug the connected leads and accessories when the machine is turned on to avoid damaging the host or accessories.

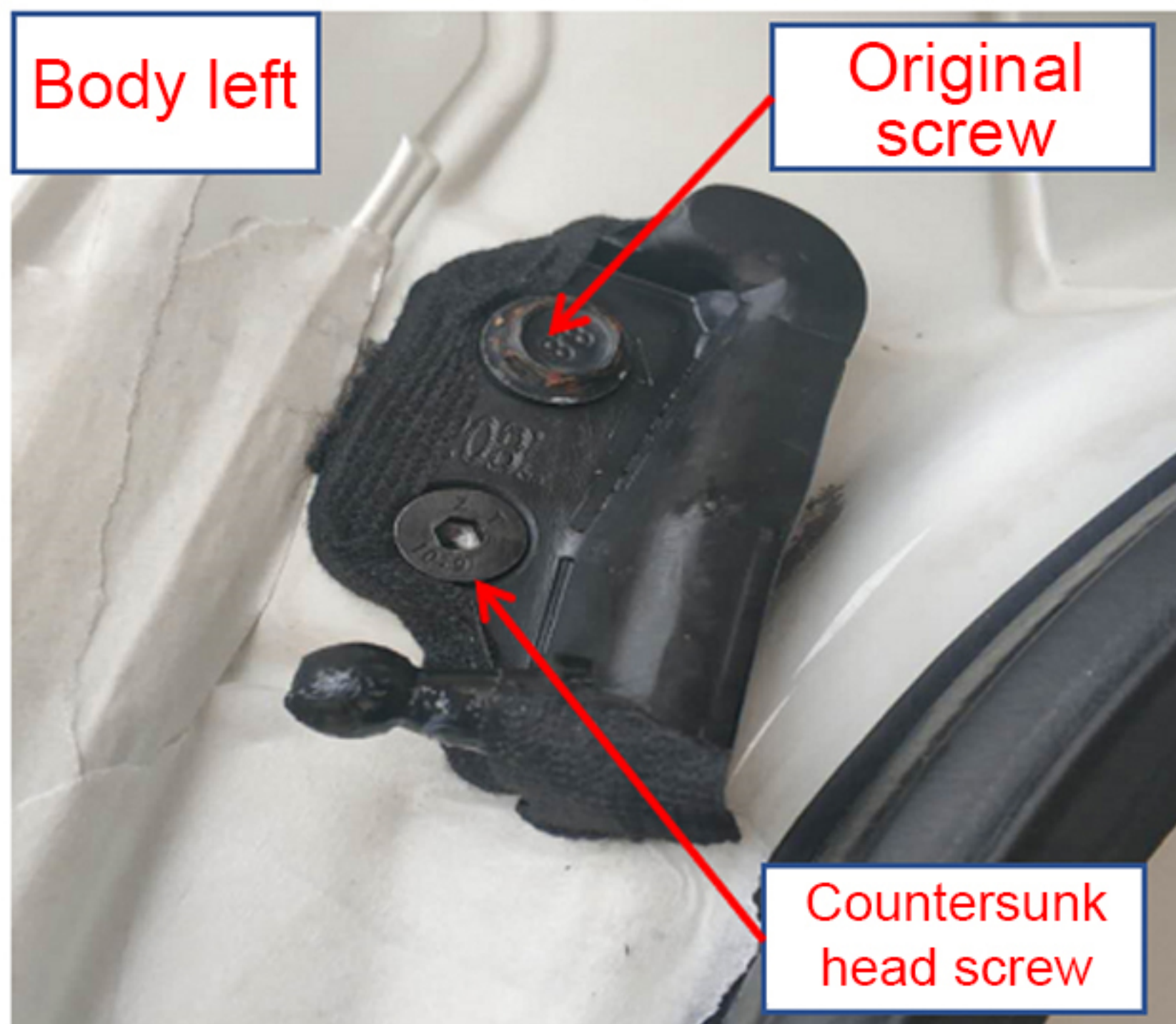
10. If the original vehicle key has a tailgate open key ( ), please press this key for a long time to open and close the electric tail. If not, please press the unlock key three times to open and close the electric tail.

▲ After installation, close the trunk manually for system initialization  
**Full set of accessories**

**Installation instructions**



1: Remove the original air strut (left and right are the same)



2: Remove the original body bracket and install the special body bracket. Note that the direction arrow of the bracket to the head L is left R is right, and the ball head is outward (left and right are the same)



3: Remove the original door bracket and install the special door bracket. Note that the direction arrow of the bracket points to the tail lamp, which is left and R is right (both sides are the same)



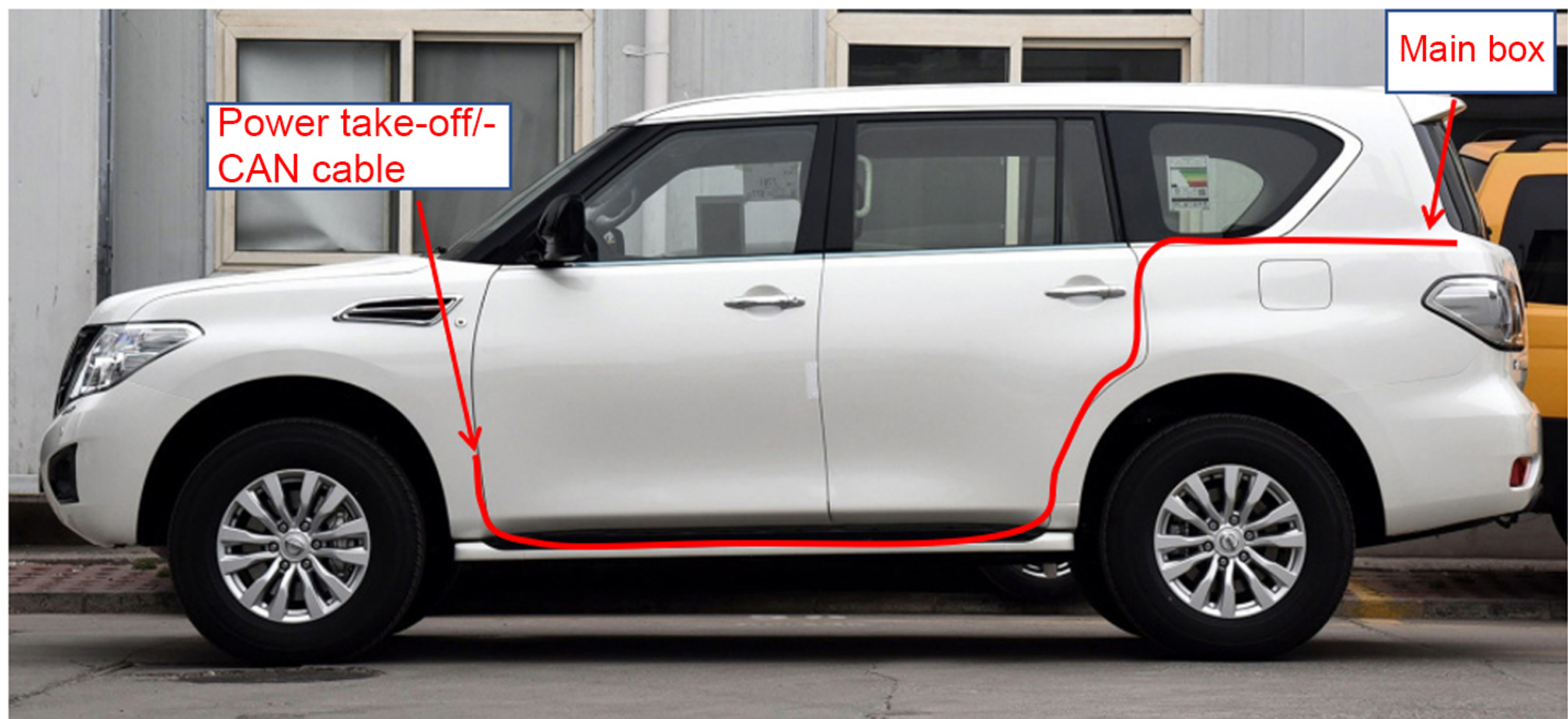
4: Install the ball and socket of the special electric brace in the direction of the brace line and install it on the door bracket (left and right are the same)



5: Remove the boot trim panel in turn



6: Use a 16mm drill bit to drill holes above the stay bar to pass through the motor wire, and plug the corrugated pipe rubber plug



7: General wiring diagram



8: Pass the power cord/front key cord/CAN cord through the bellows of the original vehicle from top to bottom



9: Connect the ground wire to the tailgate ground



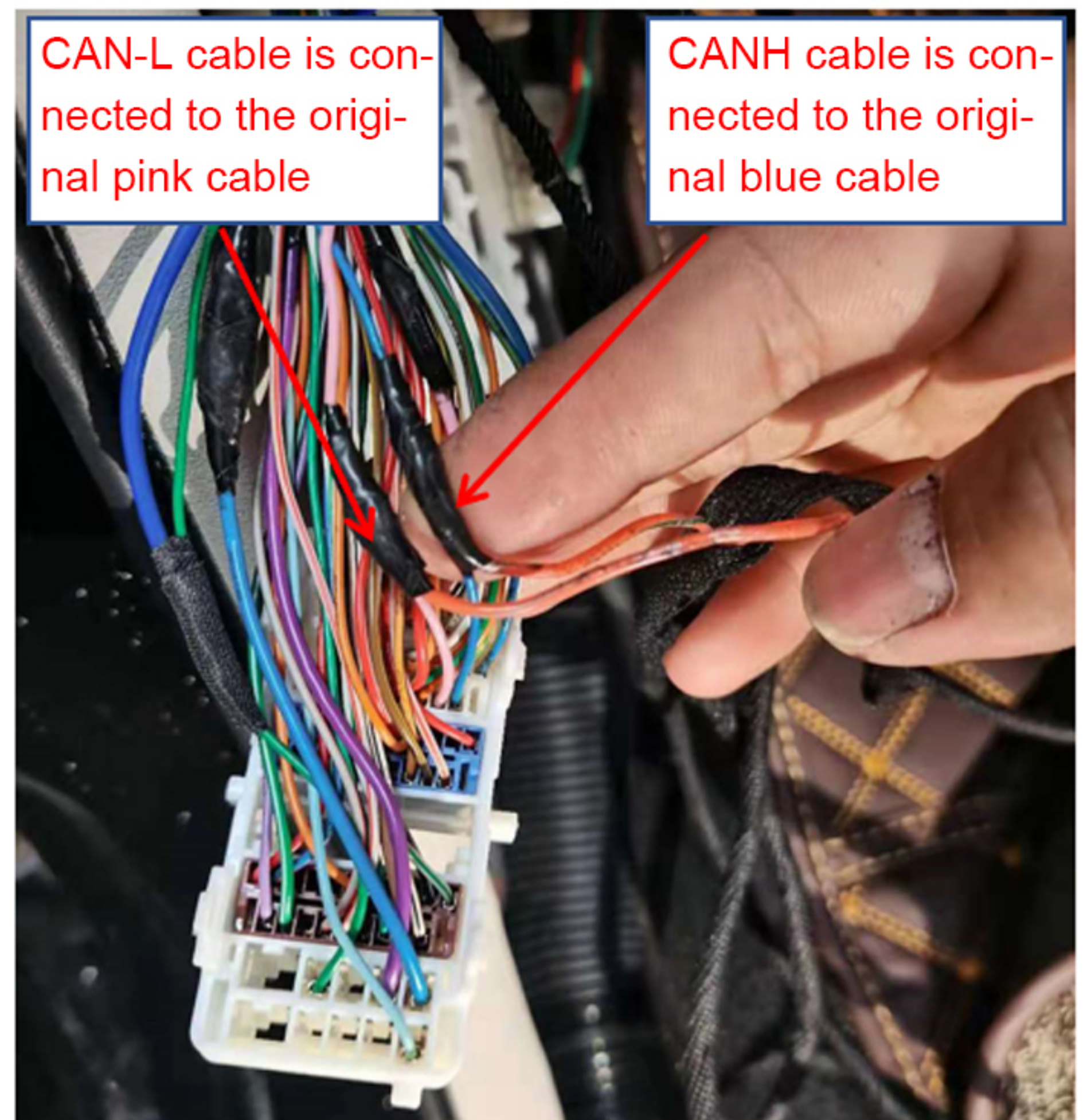
10: The tailgate key plug on the lock cable is connected to a pair of plugs



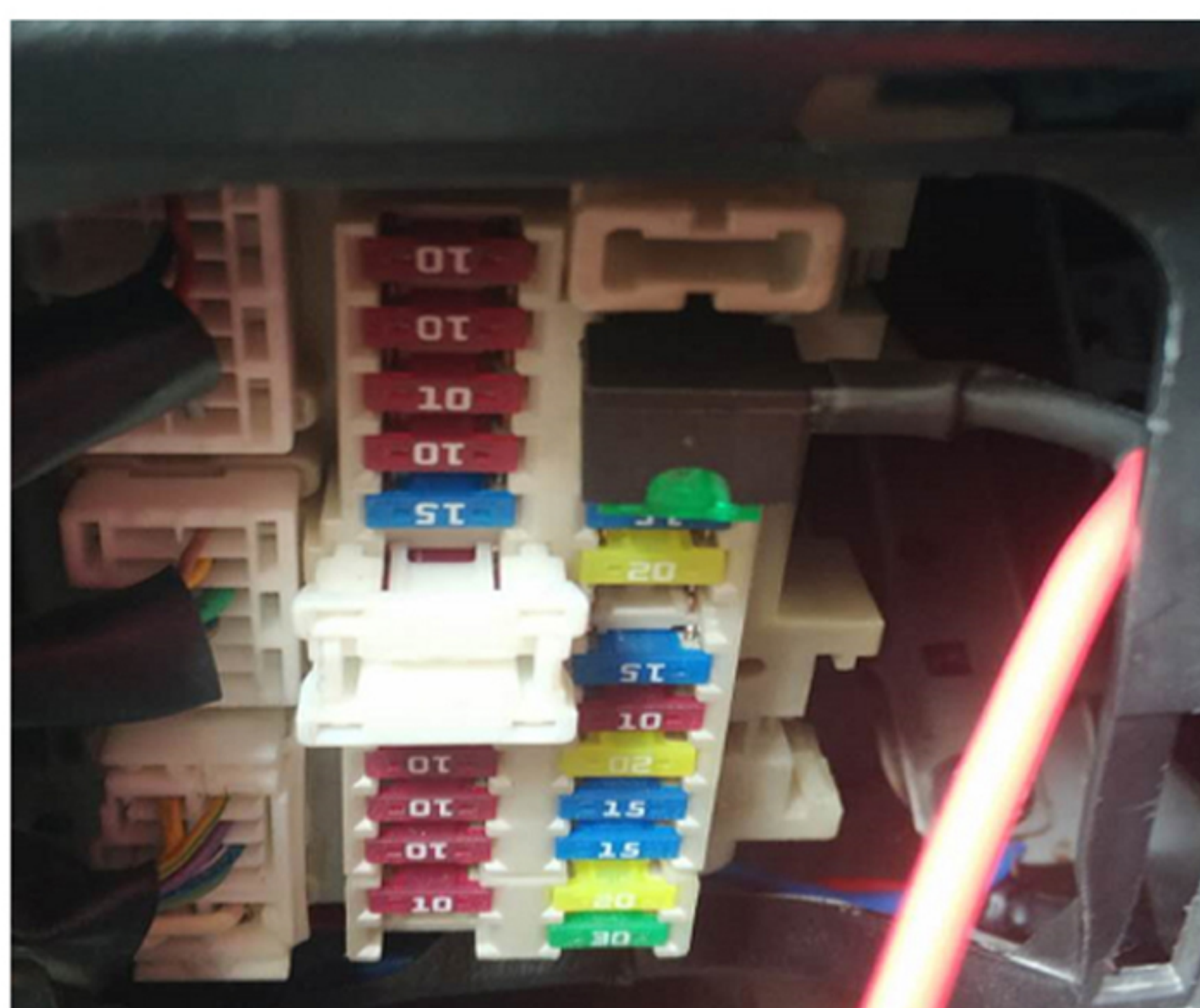
11: Install our rear button



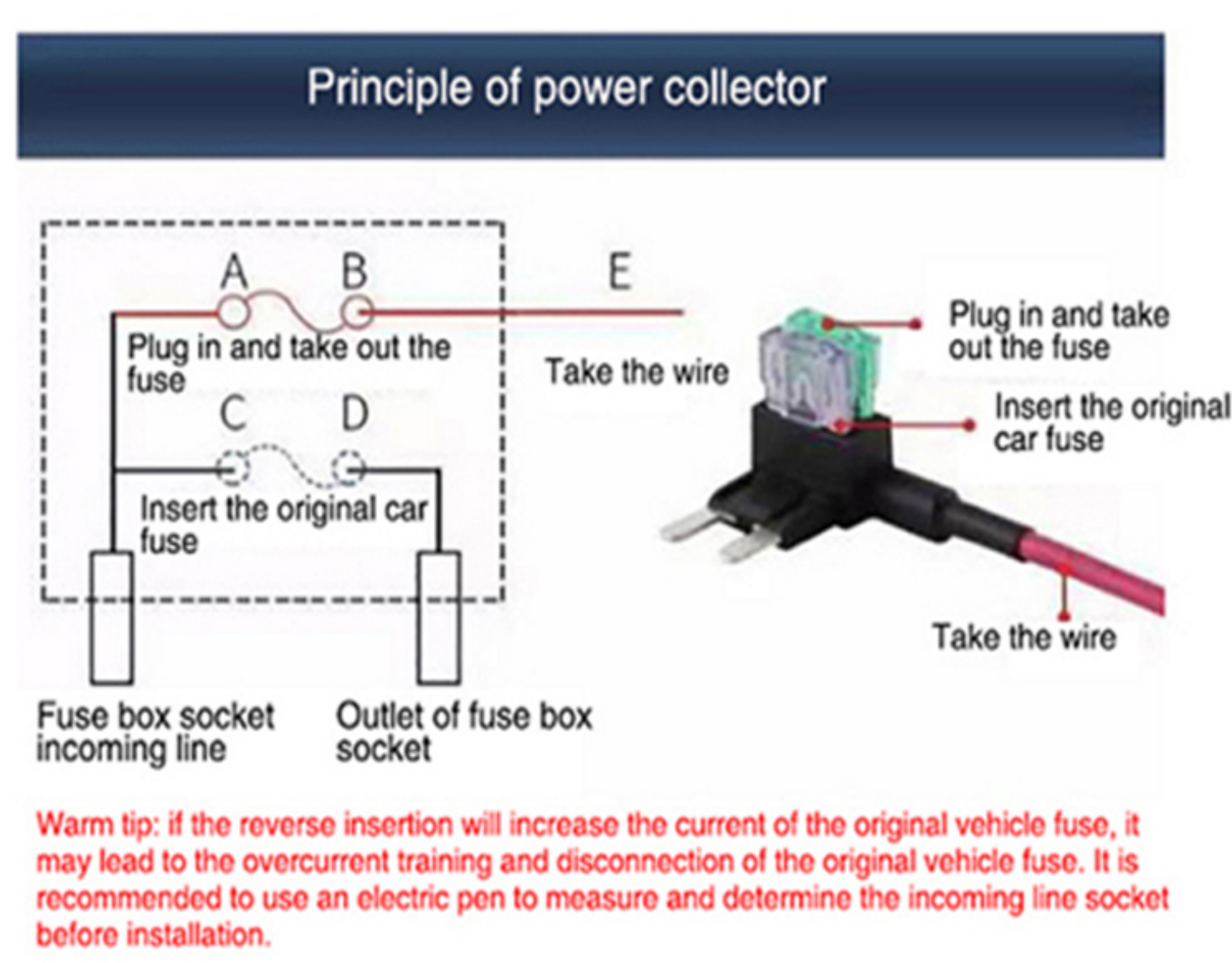
12: The CAN line is on the large white plug in the left triangle



13: CANH line (white line) is connected to the blue line of the original vehicle, and CAN-L line (brown line) is connected to the pink line of the original vehicle



16: Find the fuse box at the bottom left of the steering wheel. First take out the fuse of the original vehicle and insert it into the electrical outlet, and then insert the electrical outlet back to the original hole. Pay attention to the direction of the electrical outlet and do not insert it reversely



17: Fuse definition diagram



18: After the tailgate is installed, pull out the plug for 1 minute and then plug it back. Note: This operation must be performed when the ECU of our company is powered on, otherwise the electric suction lock of the original vehicle cannot work normally

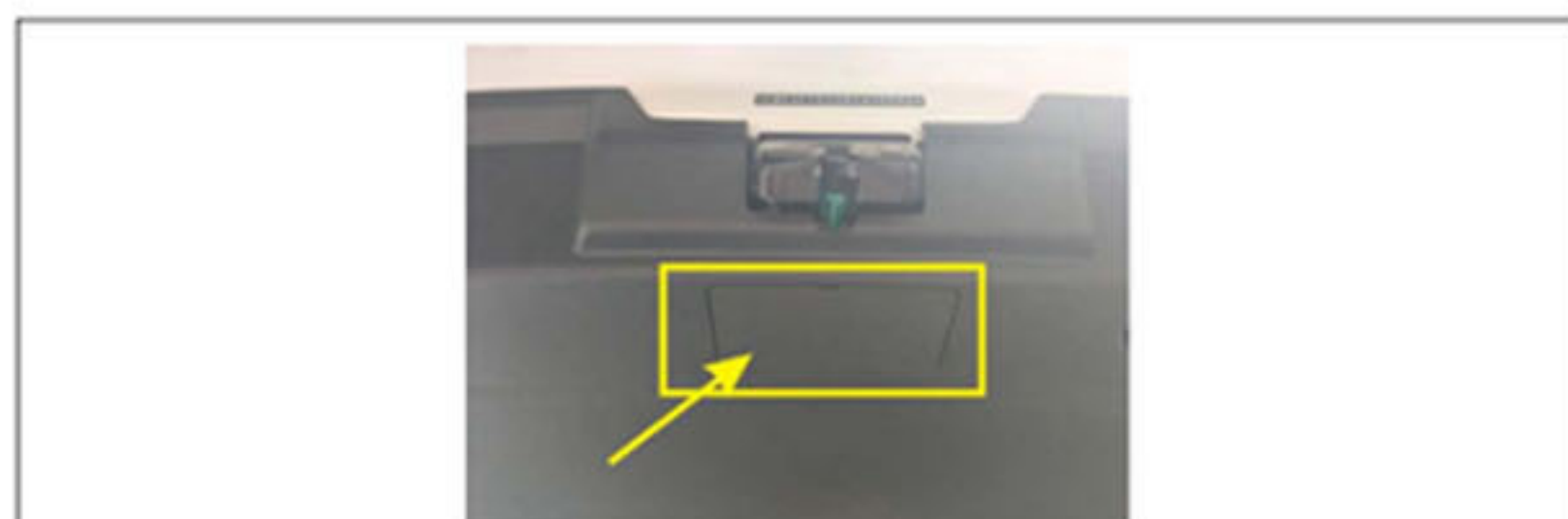
## Operation and setting method of installing tailgate button:

Press and hold the button of "installing tailgate" for a long time, and the first sound is "setting height"

The second sound is to increase anti pinch

The third sound is the closing speed

The fourth sound is to restore the factory settings



When the tailgate cannot be opened normally, find the emergency safety lock of the original vehicle in the trunk, open the emergency cover, and pull the emergency switch to open it.

### Matters needing attention



After installation, please check:

1. Whether the bracket and screw are installed as described in the installation instructions
2. Whether all plugs are plugged in properly, left behind and tightly
3. Check whether the harness is damaged or pinched during wiring
4. Whether the negative pole of the power supply is connected to the special grounding position of the original vehicle

### Function description

After power on, the door must be manually closed and reset once before the function can be used normally.

**Note: do not use a screwdriver or other tools to close the door with a secondary lock, otherwise a series of problems such as abnormal opening and closing may occur**

1. Control mode of opening and closing the tailgate	1 remote opening and closing: press the remote unlocking key three times (long press the tailgate key for some models) to control the opening and closing of the tailgate. <b>Note: when pressing the unlock key, press it 3 times at a constant speed within 4S</b>
	2. The original driver of the tailgate pressed the button to control the opening and closing of the tailgate. <b>Note: the control mode is the same as before installation, and it takes effect only when the vehicle is unlocked</b>
	3 front key / central unlocking key: long press the front key for about 1.5s to control the opening and closing of the tailgate; If there is no front key, press the unlocking key of the original central control for 3 times to control the opening and closing of the tailgate <b>Note: the function of opening the tailgate by pressing the front button only works when the engine is turned off or P. The function of closing the tailgate will take effect at any time; The functions of opening and closing the tailgate with the central unlocking key are only effective when the ignition is off</b>
	4 tailgate rear key: press once to control the closing of tailgate
2 Anti pinch function	In the process of opening and closing the door, if there are obstacles, the tailgate will stop immediately to avoid accidents
3. Buzzer reminder (in the	A. A. after the electric suction is completed, the buzzer quickly "beeps

process of opening and closing the tailgate, there will be corresponding sound reminders at different stages. When the electric suction is abnormal, the buzzer will give an alarm.)	* twice, indicating that the electric suction is normal and the secondary lock is in place
	B. After the electric suction is completed, the buzzer does not sound, which means that the electric suction is normal and the secondary lock is not in place.
	C. After the electric suction is inhaled or spitted out, the buzzer sounds for about 10 seconds, indicating that the electric suction is faulty (it may be that the electric suction is stuck or the electric suction cable is in poor contact)
4. Electric suction function	In the process of closing the tailgate, it has the characteristics of stable speed and low sound, which makes the user experience more comfortable
5. Description of buttons behind tailgate	1. Press the rear button to adjust the opening height of the tailgate: when opening the door, manually adjust the tailgate to the desired height. Press the rear button for a long time and release it after hearing the buzzer ring for a long time. The height memory is set successfully. The tailgate will open to this position next time. <b>Note: the set height cannot exceed the preset height, otherwise the door may not be opened and closed normally</b>

### Common problem

<b>A. Correct installation of bracket:</b> If the bracket is installed reversely, the tailgate will not close and the car body will be scratched.
<b>B. Whether the bracket screws are replaced as required:</b> If the bracket screws are not replaced as required, the stay rod will push against the screws, which will cause the tailgate to fail to close.
<b>C. whether the plug is tightly plugged:</b> If the plug is not plugged tightly, it may lead to abnormal opening and closing of the tailgate, failure of electric suction, and ineffective key function.
<b>D. Whether the electric stay is installed as required:</b> Check whether the direction of the motor end of the stay is installed as required. After the electric stay is installed, check whether the snap ring is clamped in.
<b>E. Wires are not installed as required:</b> The removed original vehicle fuse must be inserted into the wire taken by our company, otherwise it may cause the normal use of other electronic products (there are positive and negative wires taken, please refer to the installation instructions for correct instructions)
<b>F. Installation of lower pull lock position:</b> Check whether the electric lower locking ring and the lock head are in the middle, or whether the front and rear are in the proper position. If the following locking ring is not in the proper position, it will lead to loud opening sound of the tailgate and failure to close the door
<b>G. If there is no response to the tailgate failure after a period of use, it is necessary to check whether the vehicle has insufficient power or the electric tailgate fuse is burnt out.</b>
<b>H. The installation of more than 5kg sound insulation cotton on the tailgate will affect the force of opening and closing the door, and the control box needs to be strengthened.</b>
<b>I. Learn to reset after installation: close the tailgate manually and slowly. Be sure to close it tightly for the first time. Then press the original tailgate knob. If the tailgate can be opened and closed normally, the installation will be successful. (if this operation is not carried out, the electric tailgate will be abnormal during operation)</b>

Fault phenomenon	Troubleshooting
Original vehicle key function is invalid	1. Check whether the yellow wire is connected to the key unlocking signal wire 2. OBD and agreement meeting
Does not work after installation	1. Check whether the positive pole of the power supply is connected properly 2. Check whether the fuse of the power line is plugged in properly 3. Check whether the ground wire of the electric tailgate is connected to the ground wire of the original vehicle
The tailgate cannot be closed properly	1. Whether the left and right bracing rods are installed reversely 2. Check whether the box harness is plugged in properly 3. Whether the bracket and bracket screws are replaced according to our instructions 4. There are two anti-collision rubber plugs on the original tailgate. Are they tightened
Abnormal tailgate switch	Closing the door for the first time is a learning process. If the door is not closed in place for the first time, it will lead to abnormal opening and closing of the door
After the tailgate is closed, the control box will give an alarm	Check whether the trunk cushion is installed in the trunk. If the trunk cushion is high, it will press the button



#### Anti pinch function:

In the process of opening and closing the door, if there are obstacles, the tailgate will stop immediately to avoid accidents

Note: when closing the door, the anti pinch force on both sides of the stay bar is large. Do not try to prevent the side from being pinched. In case of injury, we will not be responsible